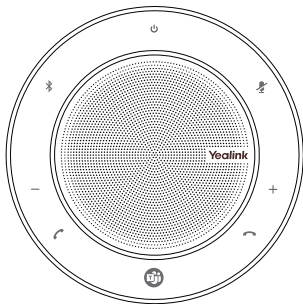




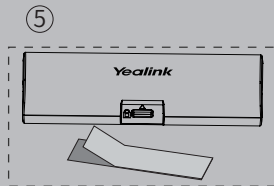
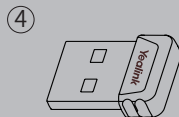
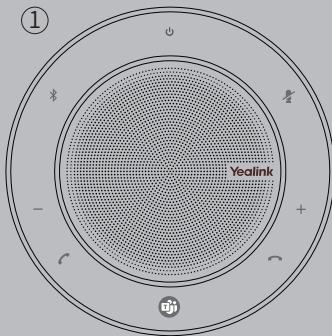
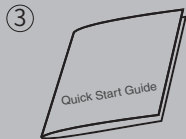
CP900 USB Speakerphone

Quick Start Guide



English / 简体中文

Package Contents



① CP900

② Protective Carrying Case

③ Quick Start Guide

④ BT50 (optional)

⑤ Cable lock box (optional)

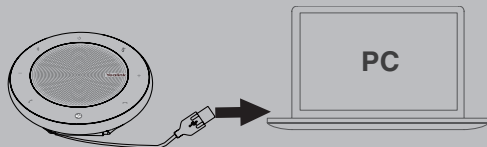


The cable lock box is included in the CP900 Room product package.

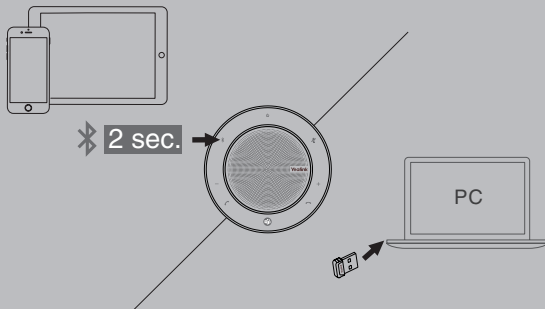
Yealink provides a USB device manager client - Yealink USB Connect, you can download it on the Yealink website support.yealink.com.

How to Connect

USB Connection and Charging

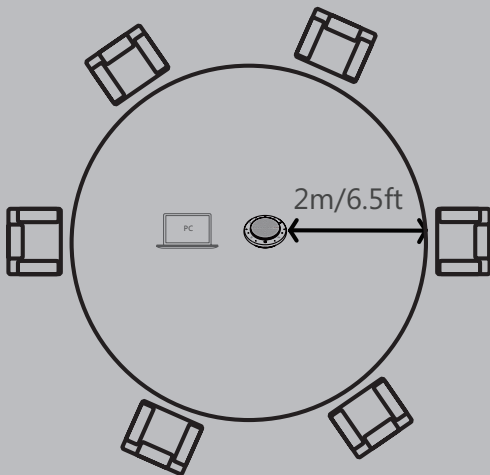


Bluetooth Connection

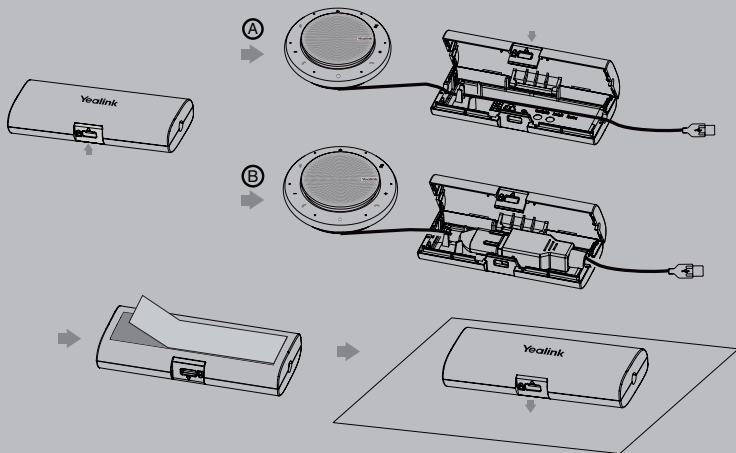


How to Place

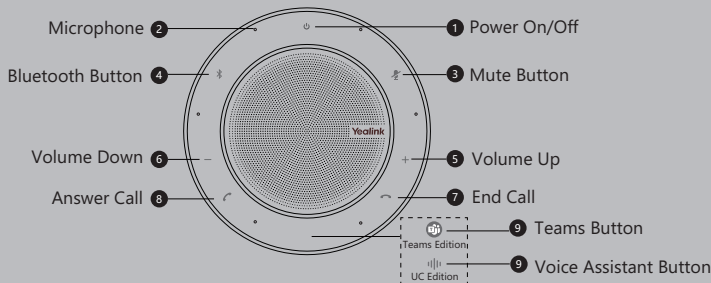
Small meeting room



Using cable lock box



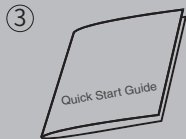
How to Use



- ① Hold 3 seconds to power on/off.
- ③ ⑦ ⑧ Tap to control calls.
- ④ Hold 2 seconds to enter the pairing mode, search and connect on the smartphone.
Double-tap to disconnect. Tap again to reconnect.
- ⑤ ⑥ Tap to turn up/down volume.
- ⑨ (Teams Edition) Tap to invoke the Teams client; Hold 2 seconds to activate Cortana.
(UC Edition) Hold 2 seconds to activate smartphone's voice assistant.

If your CP speaker needs warranty service, the process is quick and easy. Please go to <https://ticket.yealink.com/page/headset/warranty-service.html> and submit RMA Claim to Yealink.

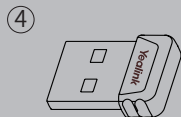
包装清单



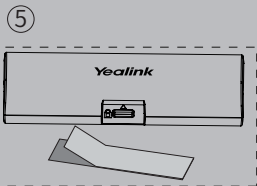
① CP900



② 便携包



④ BT50(可选)



⑤ USB 锁线盒 (可选)

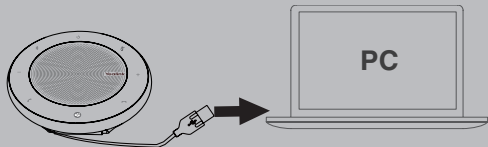
③ 快速入门指南

💡 CP900 的无线型号核准代码体现在产品铭牌上；BT50 的无线型号核准代码体现在产品说明书上，型号核准代码为 CMIIT ID: 2019DP8976。对于 CP900 Room 产品包，USB 锁线盒是标配的。

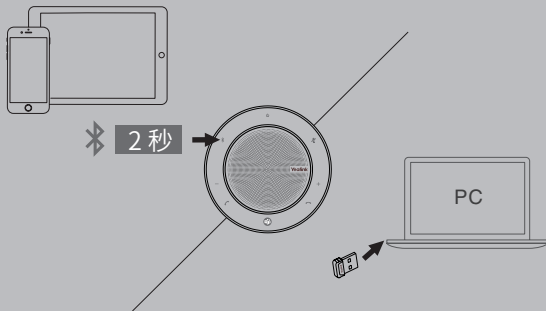
消费者若使用电源适配器供电，则应购买配套使用满足相应安全标准要求电源适配器或者是获得 CCC 认证的电源适配器。亿联提供 Yealink USB Connect 升级管理工具，请从 support.yealink.com 下载。

连接

USB 连接和充电

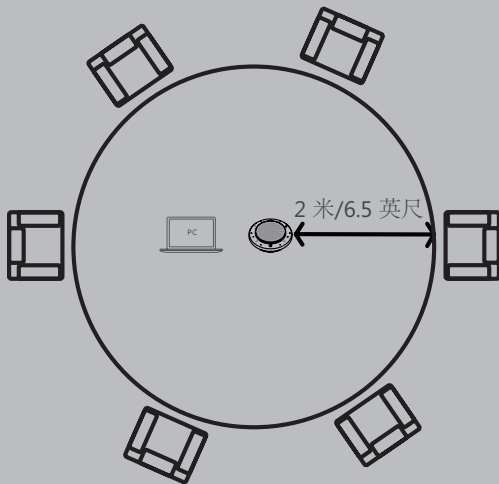


蓝牙连接

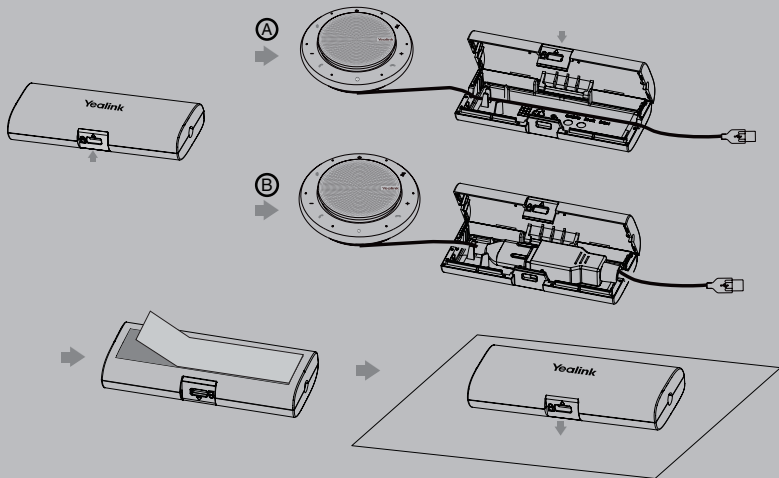


摆放位置

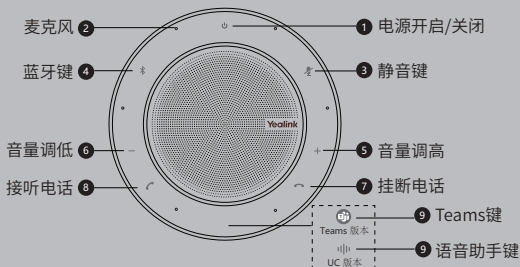
小会议室



使用 USB 锁线盒



使用



- ① 长按 3 秒开机 / 关机。
- ③ ⑦ ⑧ 按下按键控制通话。
- ④ 长按 2 秒进入蓝牙配对模式，然后在智能手机搜索和连接。
双击断开连接。再次按下按键可重新连接。
- ⑤ ⑥ 按下按键调高或调低音量。
- ⑨ (Teams 版本) 按下按键调出 Teams 客户端；长按 2 秒激活 Cortana。
(UC 版本) 长按 2 秒唤醒智能手机的语言助手。

如果您需要进行 RMA 替换货服务，您可以到 <https://ticket.yealink.com/page/headset/warranty-service.html> 提交硬件问题，我们的技术支持团队会尽快为您受理。

Regulatory Notices

Operating Ambient Temperatures

- Operating temperature: +32 to 104°F (0 to 40°C)
- Relative humidity: 5% to 90%, noncondensing
- Storage temperature: -22 to +160°F (-30 to +70°C)

Warranty

Our product warranty is limited only to the unit itself, when used normally in accordance with the operating instructions and the system environment. We are not liable for damage or loss resulting from the use of this product, or for any claim from a third party. We are not liable for problems with Yealink device arising from the use of this product; we are not liable for financial damages, lost profits, claims from third parties, etc., arising from the use of this product.

Explanation of the symbols

- DC symbol
- is the DC voltage symbol.
- WEEE Warning symbol



To avoid the potential effects on the environment and human health as a result of the presence of hazardous substances in electrical and electronic equipment, and users of electrical and electronic equipment should understand the meaning of the crossed-out wheeled bin symbol. Do not dispose of WEEE as unsorted municipal waste and have to collect such WEEE separately.

Restriction of Hazardous Substances Directive (RoHS)

This device complies with the requirements of the EU RoHS Directive. Statements of compliance can be obtained by contacting support@yealink.com.

Safety Instructions

Save these instructions. Read these safety instructions before use!



General Requirements

- Before you install and use the device, read the safety instructions carefully and observe the situation during operation.
- During the process of storage, transportation, and operation, please always keep the device dry and clean, avoid collision and crash.
- Please attempt not to dismantle the device by yourself. In case of any discrepancy, please contact the appointed maintenance center for repair.
- Please refer to the relevant laws and statutes while using the device. Legal rights of others should be respected as well.



Environmental Requirements

- Place the device at a well-ventilated place. Do not expose the device under direct sunlight.
- Keep the device dry and free of dusts.
- Do not place the device on or near any inflammable or fire-vulnerable object, such as rubber-made materials.
- Keep the device away from any heat source or bare fire, such as a candle or an electric heater.



Operating Requirements

- Do not let a child operate the device without guidance.
- Do not let a child play with the device or any accessory in case of accidental swallowing.
- Please use the accessories provided or authorized by the manufacturer only.
- The power supply of the device shall meet the requirements of the input voltage of the device. Please use the provided surge protection power socket only.
- Before plugging or unplugging any cable, make sure that your hands are completely dry.
- Do not spill liquid of any kind on the product or use the equipment near water, for example, near a bathtub, wash-bowl, kitchen sink, wet basement or near a swimming pool.
- During a thunderstorm, stop using the device and disconnect it from the power supply. Unplug the power plug and the Asymmetric Digital Subscriber Line (ADSL) twisted pair (the radio frequency cable) to avoid lightning strike.
- If the device is left unused for a rather long time, disconnect it from the power supply and unplug the power plug. When there is smoke emitted from the device, or some abnormal noise or smell, disconnect the device from the power supply, and unplug the power plug immediately.
- Contact the specified maintenance center for repair.
- Do not insert any object into equipment slots that is not part of the product or auxiliary product.
- Before connecting a cable, connect the grounding cable of the device first. Do not disconnect the grounding cable until you disconnect all other cables.



Battery Requirements

- Do not immerse the battery into water, which could short-circuit and damage the battery.
- Do not expose the battery to an open flame or leave the battery where it could be subjected to extremely high temperatures, which could cause the battery to explode.
- Do power the handset off before removing the battery.

- Do not try to use the battery for the power supply of any device other than this handset.
- Do not open or mutilate the battery, released electrolyte is corrosive and may cause damage to your eyes or skin.
- Use only the rechargeable battery pack delivered with the handset or those rechargeable battery packs expressly recommended by Yealink.
- Defective or exhausted battery should never be disposed of as municipal waste. Return old battery to the battery supplier, a licensed battery dealer or a designated collection facility.



Cleaning Requirements

- Before cleaning the device, disconnect it from the power supply.
- Use a piece of soft, dry and anti-static cloth to clean the device.
- Keep the power plug clean and dry.

Troubleshooting

The unit cannot supply power to Yealink device.

There is a bad connection with the plug.

1. Clean the plug with a dry cloth.

2. Connect it to another wall outlet.

The usage environment is out of operating temperature range.

1. Use in the operating temperature range.

The cable between the unit and the Yealink device is connected incorrectly.

1. Connect the cable correctly.

You cannot connect the cable properly.

1. You may have connected a wrong Yealink device.

2. Use the correct power supply.

Some dust, etc., may be in the port.

1. Clean the port.

Contact your dealer or authorized service facility for any further questions.

FCC CAUTION:

This device complies with part 15 of the FCC Rules. Operation is subject to the following two conditions: (1) This device may not cause harmful interference, and (2) this device must accept any interference received, including interference that may cause undesired operation. Any changes or modifications not expressly approved by the party responsible for compliance could void the user's authority to operate the equipment.

Note: This equipment has been tested and found to comply with the limits for a Class B digital device, pursuant to part 15 of the FCC Rules. These limits are designed to provide reasonable protection against harmful interference in a residential installation. This equipment generates, uses and can radiate radio frequency energy and, if not installed and used in accordance with the instructions, may cause harmful interference to radio communications. However, there is no guarantee that interference will not occur in a particular installation. If this equipment does cause harmful interference to radio or television reception, which can be determined by turning the equipment off and on, the user is encouraged to try to correct the interference by one or more of the following measures:

- Reorient or relocate the receiving antenna.
- Increase the separation between the equipment and receiver.
- Connect the equipment into an outlet on a circuit different from that to which the receiver is connected.
- Consult the dealer or an experienced radio/TV technician for help.

The equipment complies with FCC radiation exposure limits set forth for an uncontrolled environment. This transmitter must not be co-located or operating in conjunction with any other antenna or transmitter.

ISED WARNING:

This device complies with Innovation, Science and Economic Development Canada licence-exempt RSS standard(s). Operation is subject to the following two conditions: (1) this device may not cause interference, and (2) this device must accept any interference, including interference that may cause undesired operation of the device.

Le présent appareil est conforme aux CNR d'Industrie Canada applicables aux appareils radio exempts de licence. L'exploitation de l'appareil doit accepter tout brouillage radioélectrique subi, même si le brouillage est susceptible d'encombrer le fonctionnement de l'appareil.

This Class B digital apparatus complies with Canadian ICES-003. Cet appareil numérique de la classe B est conforme à la norme NMB-003 du Canada.

Les communications effectuées au moyen de cet appareil ne sont pas nécessairement protégées des indiscretions.

The equipment complies with FCC radiation exposure limits set forth for an uncontrolled environment. The equipment must be installed and operated with minimum distance 20cm between the radiator and your body.

Déclaration d'exposition aux rayonnements: Cet équipement est conforme aux limites d'exposition aux rayonnements ISED Canada établies pour un environnement non contrôlé. Cet équipement doit être installé et utilisé avec un minimum de 20cm de distance entre la source de rayonnement et votre corps.

EUC Regulatory Information

Support Frequency Bands and Power:

Bluetooth 2.4GHz < 20 dBm

Contact Information

YEALINK NETWORK TECHNOLOGY CO., LTD.

309, 3rd Floor, No. 16, Yun Ding North Road, Hui District, Xiamen City, Fujian, P.R.C

YEALINK (EUROPE) NETWORK TECHNOLOGY B.V.

Strawinskylaan 3127, Atrium Building, 8th floor, 10772X Amsterdam, The Netherlands

YEALINK (USA) NETWORK TECHNOLOGY CO., LTD.

999 Peachtree Street Suite 2300, Fulton, Atlanta, GA, 30309, USA

Made in China



43104002075